

AQUASHIELD

WATERPROOFS ROOFS INSTANTLY

AGGREGATED COATING For safety on high level walkways and gutters

PERFORMANCE ADVANTAGES

- > Works instantly
- > Ready to use
- > Particularly suitable for general maintenance work
- > **AGGREGATED FOR APPLICATION ON HIGH LEVEL WALKWAYS AND GUTTERS AS A SAFETY MEASURE**
- > Rainfall immediately after application has no adverse effect
- > Solvent based

USES

Ready for use on flat roofs, pitched roofs, high level walkways, weathered asphalt and bituminous surfaces, gutters, concrete, brickwork, GRP and fibreglass, felt and metal (galvanised and ferrous). Can also be used on balconies (light use only).

For other surfaces see Preparation and Application.

- > Can be brush or roller applied.

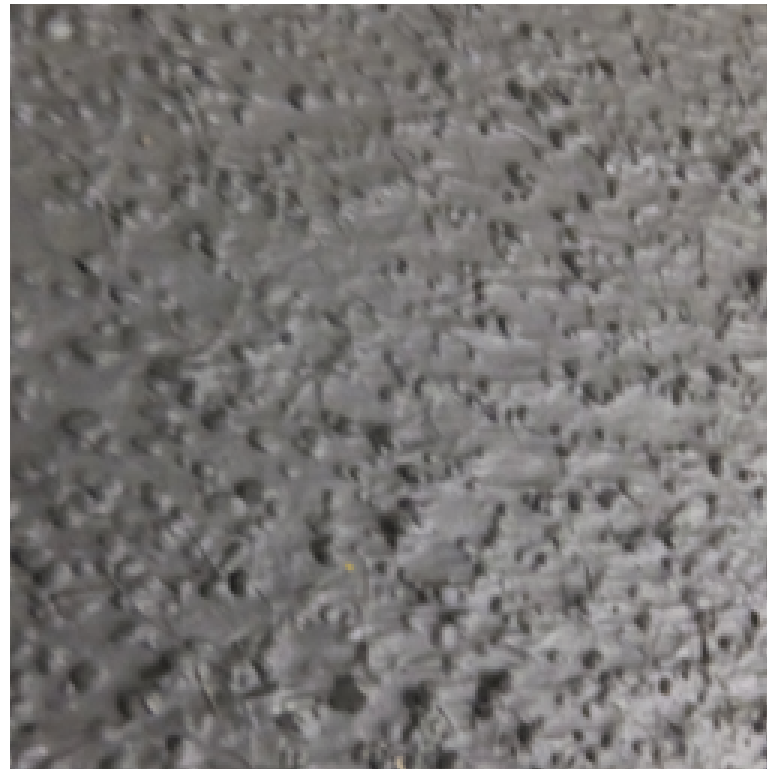
Not for use on timber surfaces, new and aged PVC, plasticised PVC (Plastisol) or internal use.

COLOUR RANGE

- > Grey, Black and Solar Reflective White. Other colours to order.

PACK SIZE

- > 5 kg and 20 kg containers.



SPREADING RATE

- > *High Build Coat:* between 1kg - 2kg per square metre dependent on substrate.
- > Applied as a topcoat approximately 1kg per square metre dependent on substrate.

DRYING TIME

- > Instant waterproof protection. Touch dry in 3-4 hours and completely cured within 6-7 days.
- > The product may remain slightly soft for a further period depending on climatic conditions, this is not detrimental to the waterproofing qualities of the product.

WATER REPELLENCY

- > Rainfall immediately after application has no adverse effect.

SHELF LIFE

- > Up to 2 years if stored correctly in an unopened container.

PREPARATION AND APPLICATION

Clear all areas of moss, lichen and debris by brushing or power washing and remove surface water and any contamination such as Oil or Grease and allow to dry. Apply Britannia Fungicidal Wash to prevent further fungal/algal growth.

Most roofing substrates to be treated will not normally require priming.

To the dry and cleaned surface, apply a generous coat of Britannia Aquashield Aggregated Waterproof Roof Coating by brush, roller or squeegee, at the minimum specified spreading rate as stated above under the heading.

Application Temperature should be between 5°C-25°C.

SUBSTRATE TYPES

Highly porous/friable surfaces

Concrete, Concrete and Asbestos Cladding, Sheeting and Guttering should be primed with Britannia Aquashield Primer (see separate technical sheet) prior to over coating with Britannia Aquashield Aggregated Waterproof Roof Coating.

These Surfaces - Must be jet washed prior to applying the Britannia Aquashield Primer.

Metal Surfaces

- > Ferrous-New, Weathered and previously painted galvanised iron and steel.
- > Non-Ferrous Metals - Aluminium sheeting & Aluminium Alloy Box gutters and previously painted non-Ferrous Metals.

All these areas should be suitably prepared and primed as appropriate (see separate technical sheet) before application of Britannia Aquashield Aggregated Waterproof Roof Coating.

Non-porous substrates

Slate, Polished bricks should be power washed abraded and completely dry, free from any contamination to achieve adhesion of the Britannia Aquashield Aggregated Waterproof Roof Coating.

Bitumen surfaces

Discolouration may occur over a new asphalt, tar or bitumen surface; therefore an extra coat may be required, for decorative purposes only. Aged bitumen can be liable to crack, therefore further advice must be taken.

Previously painted or coated substrates

IT IS GOOD PRACTICE TO INSPECT AND CARRY OUT ADHESION TESTS ON ANY EXISTING COATING OR SUBSTRATE PRIOR TO APPLICATION OF THE COATING.

Splits, Cracks, Joints and Seals

Pay particular attention to clean out any splits/cracks/joints and seals by scraping or brushing off with a stiff bristle brush before applying the Britannia Aquashield Primer. Repair all faults in the surface by either Britannia's Reinforcing Scrim in the first of two coats or using a proprietary sealer.

Crazed areas

These should be primed with Britannia Aquashield Primer prior to the application of a coat of Britannia Aquashield Aggregated Waterproof Roof Coating.

In areas where excessive movement may occur additional reinforcement must be incorporated into the coating.

IMPORTANT

- > Britannia Aquashield instantly weatherproofs a wide range of exposed surfaces. It is water resistant and ideal for general maintenance and repair work.
- > Where long-term waterproofing is required, Aquashield will provide an effective barrier until a full system or more permanent solution can be implemented.
- > Britannia Aquashield is not recommended for the treatment of wooden surfaces, tanking, fishponds or internal use.
- > Air conditioning vents should be sealed for a minimum of 24 hours during and after the application.
- > This coating is only valid for applications in the UK.
- > **MINIMUM FINISHED FALL: when using this product it is important that a minimum finished fall of 1:80 is achieved, as stated in BS 6229.2003 (Code of Practice for the application of Liquid Applied Waterproofing Systems to flat roofs with continuously supported coverings).**

CLEANING

For all cleaning use White Spirit.

PRECAUTIONS

- > **Flammable** keep away from sources of ignition.
- > Ensure good ventilation during application.
- > Over occupied premises during insulation of coatings we would advise keeping windows closed.
- > Wear gloves, goggles and suitable protective clothing.
- > In case of contact with eyes rinse immediately with plenty of water and seek medical advice.
- > Remove splashes from the skin with a recognised hand cleaner or plenty of soap and water.
- > Keep out of reach of children.
- > Do not use near fishponds.
- > Toxic to aquatic organisms. May cause long term adverse effects in the aquatic environments.
- > Do not empty into drains.

SAFETY

Good working practice should be followed and safety/walking boards should be utilised where required.

The specification and coverage rates are given in good faith and are based on our experience and knowledge but without liability.

As Britannia Paints Limited has no direct control over the methods employed by the user in applying its products, any warranty either written or implied is given in good faith and can only cover the material itself.

There is a Code of practice from LRWA-“Specification and use of Liquid Applied Waterproofing Systems” on www.lrwa.org.uk which can be consulted for general advice.

If in doubt regarding any of the above points, please contact our technical services department for advice.

A Material Safety Data Sheet is available on request.

It is the users responsibility to ensure that this data sheet is current prior to using the product.



Certificate Number 8516
ISO 9001



Unit 7/8 King Street Trading Estate, Middlewich, Cheshire CW10 9LF
T: 01606 834015 F: 01606 837006 E: sales@britanniapaints.co.uk www.britanniapaints.co.uk

Version 18 / Sep 2023