

DAMP PROOF PAINT

INCORPORATES A WATER REACTIVE AGENT TO TAKE CARE OF RESIDUAL SURFACE MOISTURE

PERFORMANCE ADVANTAGES

- > Solvent based pliolite resin matt coating
- > Especially formulated to deal with damp interior walls
- > Incorporates a water reactive agent
- > Can be left as a finish in its own right
- > Can also be used as a damp proofing primer/sealer prior to over-painting



USES

For use on damp interior wall surfaces including brick, concrete, cement and plaster (NOT BREEZE BLOCKS), either as a primer /sealer prior to overpainting or as a finish in its own right.

- > Can be brush or airless spray applied.

NOTE: THIS DOES NOT REMOVE THE NEED TO REPAIR ANY STRUCTURAL FAULTS WHICH ALLOW WATER TO PENETRATE INTO THE FABRIC OF THE WALL.

COLOUR RANGE

- > White.

PACK SIZE

- > 5L containers.

SPREADING RATE

- > Up to 8 Square metres per litre.
- > Apply 2 coats.

IT IS IMPORTANTANT TO ENSURE THAT THIS TOTAL FILM THICKNESS IS ACHIEVED-DO NOT OVERSPREAD.

DRYING TIME

- > Touch dry in 2-3 hours.
- > Recoatable after 16-24 hours.

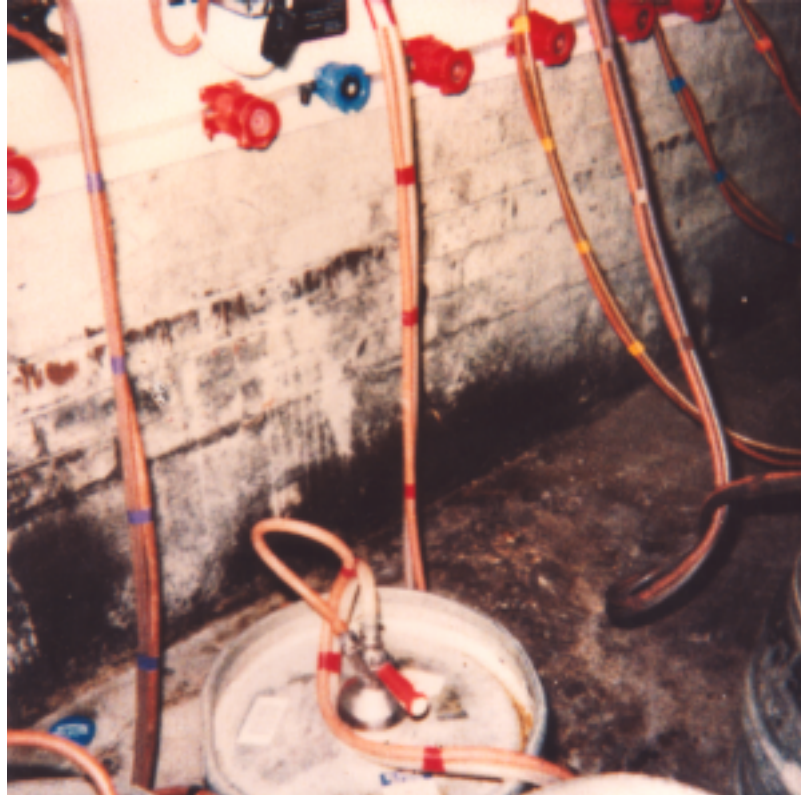
Curing of the coating can be extended at lower temperatures.

SHELF LIFE

- > Up to 2 years if stored correctly in an unopened container.

PREPARATION AND APPLICATION

- > **STIR WELL BEFORE USE.**
- > This paint should be applied preferably to unpainted masonry surfaces. however, if these have been previously painted remove as much of the old paint as possible by thorough scraping and wire brushing.
- > Avoid the inhalation of dust.
- > Wear a suitable face mask if dry sanding.
- > Treat any mould or lichen with Britannia's Fungicidal Wash Solution before removing with a scraper or stiff brush, then treat again.
- > Special precautions should be taken during surface preparation of pre 1960s paint surfaces over wood and metal as they may contain harmful lead.



CLEANING

- > Remove as much as possible from application equipment before cleaning.
- > Clean equipment immediately after use with white spirit.

PRECAUTIONS

- > **Flammable** keep away from sources of ignition.
- > Ensure good ventilation during application.
- > Wear gloves, goggles and suitable protective clothing.
- > In case of contact with eyes rinse immediately with plenty of water and seek medical advice.
- > Remove splashes from the skin with a recognised hand cleaner or plenty of soap and water.
- > Keep out of reach of children.
- > Do not use near fishponds.
- > Toxic to aquatic organisms. May cause long term adverse effects in the aquatic environments.
- > Do not empty into drains

SAFETY

Good working practice should be followed and safety/walking boards should be utilised where required.

The specification and coverage rates are given in good faith and are based on our experience and knowledge but without liability.

As Britannia Paints Limited has no direct control over the methods employed by the user in applying its products, any warranty either written or implied is given in good faith and can only cover the material itself.

If in doubt regarding any of the above points, please contact our technical services department for advice.

A Material Safety Data Sheet is available on request.

It is the users responsibility to ensure that this data sheet is current prior to using the product.



Cert: 8516



Unit 7/8 King Street Trading Estate, Middlewich, Cheshire CW10 9LF
T: 01606 834015 F: 01606 837006 E: sales@britanniapaints.co.uk www.britanniapaints.co.uk

Version 13 Apr 2020