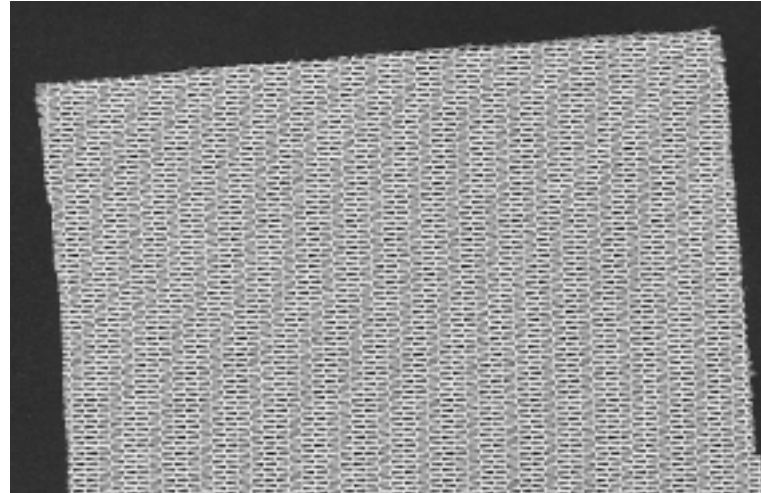


# REINFORCING SCRIM

## DESCRIPTION

A polyester based reinforcing mesh which is used to repair areas of roof and to build up layers of reinforcement with the Aquashield roofing products for increased coating lifetime.



## USES/SUBSTRATES

Ready for use on all surfaces with the appropriate filler or primer prior to applying topcoats.

## COLOUR

> Scour.

## PACK SIZE

- > Roll Length-Available in several lengths to order.
- > Material Thickness - 0.45 mm
- > Roll width - 1.05m
- > Roll length - 150m - 200m (can be cut to lengths)



## PHYSICAL CONSTANTS

- > Weight: 76-78 Grams/Metre
- > Burst Strength\*: 720 Kpa\* (conducted on a 30 mm diameter aperture)
- > Tensile Strength: 29KGS-WARP  
50mm Sample-BS 4650 35KGS-WEFT

## PRECAUTIONS

- > Non known - A safe inert product to apply.

## SAFETY

Good working practice should be followed and safety/walking boards should be utilised where required.

The specification and coverage rates are given in good faith and are based on our experience and knowledge but without liability.

*As Britannia Paints Limited has no direct control over the methods employed by the user in applying its products, any warranty either written or implied is given in good faith and can only cover the material itself.*

If in doubt regarding any of the above points, please contact our technical services department for advice.

**A Material Safety Data Sheet is available on request.**

*It is the users responsibility to ensure that this data sheet is current prior to using the product.*